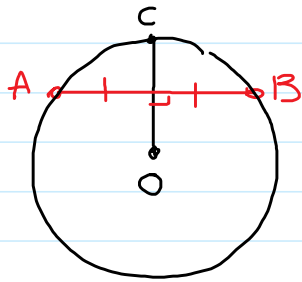


10.2 Exploring Chord Properties

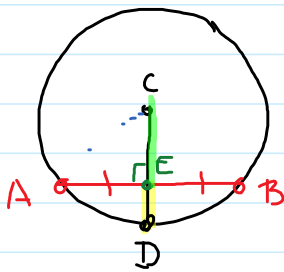
December 11, 2015 10:06 AM



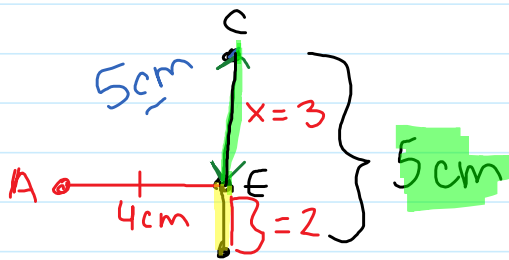
OC is radius
AB is a chord

Perpendicular bisector
A line that intersects a chord at 90° and divides the chord into 2 equal parts

Ex #1



Radius CD bisects chord AB
Chord AB = 8cm
Radius = 5cm
Solve for the length of the line segment CE?



$$a^2 + b^2 = c^2$$

$$a^2 + 4^2 = 5^2$$

$$a^2 = 25 - 16$$

$$a^2 = 9$$

$$a = 3$$

pg 389 #4-5, 7-10, 12, 19