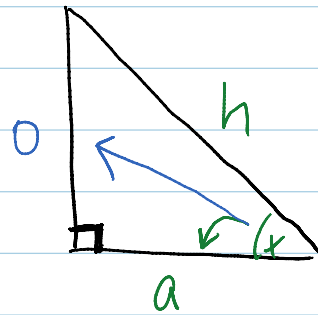
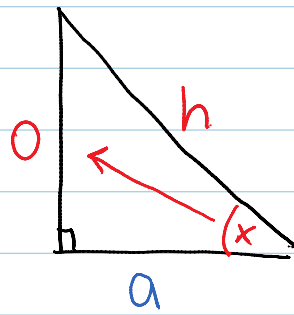
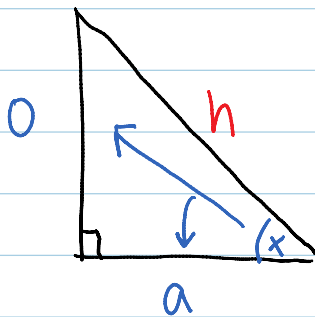


# Trigonometry

February-20-14  
9:40 AM

- study of angles and triangles

We name the sides of right triangles in relation to one of its acute angles.



$$\tan = \frac{o}{a}$$

TOA

$$\sin = \frac{o}{h}$$

SOH

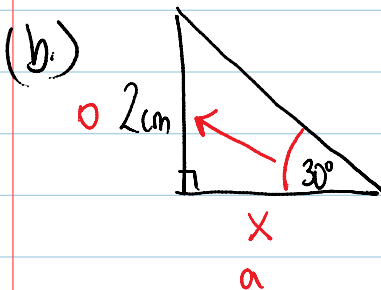
$$\cos = \frac{a}{h}$$

CAH

Ex. #1

# calculator is in Degree mode : DGR or D

(a.)  $\sin 30^\circ = \underline{0.5}$



$$\tan 30^\circ = \frac{o}{a} = \frac{2}{x}$$

$$\frac{0.57}{1} \times \frac{2}{x}$$

$$\frac{x \cdot 0.57}{0.57} = \frac{2}{0.57}$$

v. 01 v. 01

$$x = 3.46 \approx \boxed{3.5 \text{ cm}}$$