

5.4 Subtracting Polynomials

May 11, 2015 10:36 AM

recall $(-)(-) \Rightarrow +$
 $(-)(+) \Rightarrow -$
 $(+)(+) \Rightarrow +$

Symbolically

Subtract

$$(-5K^2 + 2K - 6) - (3K^2 - 4K + 1)$$

$$\underline{-5K^2} + \underline{2K} - \underline{6} - \underline{3K^2} + \underline{4K} - \underline{1}$$

* combine like terms

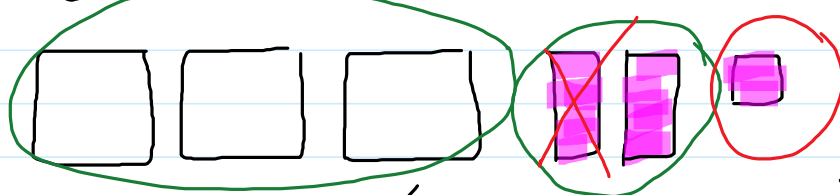
$$-5K^2 - 3K^2 + 2K + 4K - 6 - 1$$

$$\boxed{-8K^2 + 6K - 7}$$

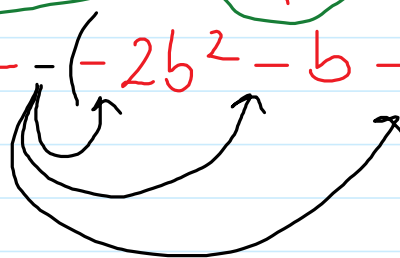
Algebra Tiles

Use tiles to model $(3b^2 - 2b - 1) - (-2b^2 - b + 2)$
Write a subtraction sentence
solve

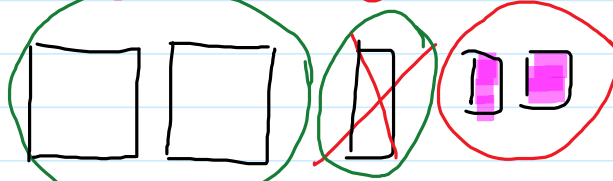
$$3b^2 - 2b - 1$$

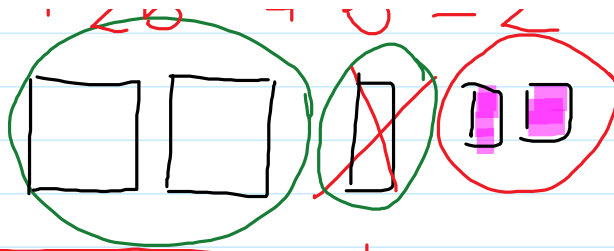


subtract $-(-2b^2 - b + 2)$



$$+2b^2 + b - 2$$





$$5b^2 - 1b - 3$$

pg 234 # 4-8, 10, 12, 13, 15