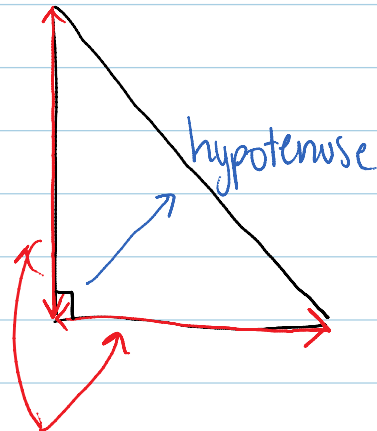


The Pythagorean Theorem

February-20-14
9:28 AM

The pythagorean theorem states the relationship between the sides of a **right triangle**

A triangle that has a 90° angle



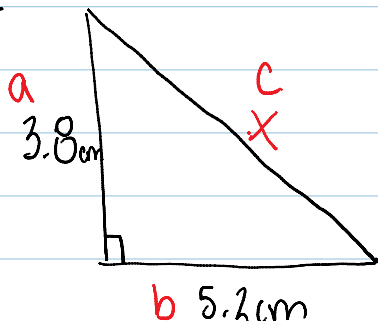
* the longest side
* the side opposite the 90° angle is always called the **hypotenuse**

* the other 2 sides of the triangle can be called **opposite** and **adjacent**.

Formula:

$$a^2 + b^2 = c^2$$

Ex. #1



$$\begin{aligned} 3.8^2 + 5.2^2 &= c^2 \\ 27.04 + 14.44 &= c^2 \\ \sqrt{41.48} &= \sqrt{c^2} \\ \boxed{6.44 \text{ cm}} &= c \end{aligned}$$